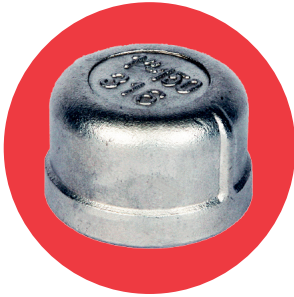
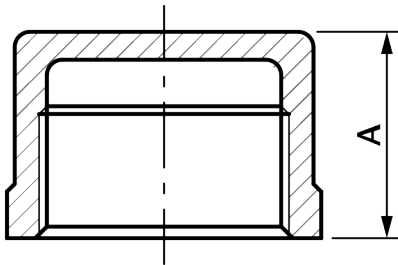


# RC Round Cap

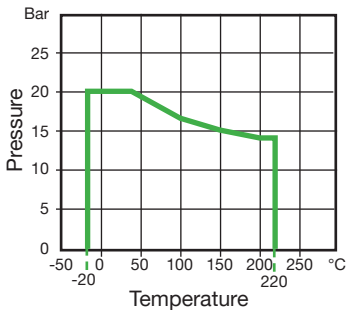


### Features

- Made from CF8M (316) Stainless Steel material and conform to ISO 4144 standard.
- Threads are to BSP Parallel (ISO 7/1) or NPT (ANSI B1.20.1).
- Material certificates available on request.
- Tested & inspected prior to despatch.
- 12 month warranty from date of installation.
- Manufactured in accordance with ISO9001:2015 quality system.



DN	A	Kgs
1/8"	15.0	0.010
1/4"	16.4	0.013
3/8"	16.5	0.017
1/2"	21.4	0.031
3/4"	22.0	0.048
1"	26.0	0.085
1 1/4"	28.0	0.127
1 1/2"	32.0	0.201
2"	33.5	0.297
2 1/2"	39.0	0.451
3"	42.0	0.670
4"	48.5	1.189



Temperature (°C)	Non-shock maximum working pressure (bar)
-20 to 40	20
100	16.5
150	15
200	14
220	13.5

- NOTE 1 Pressure for intermediate temperatures may be determined by the interpolation method.
- NOTE 2 Temperatures indicated are those of internal fluid.
- NOTE 3 Piping loads, stresses and moments are not taken into account.