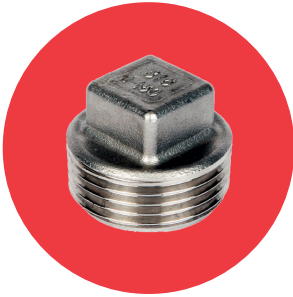


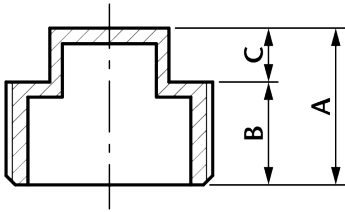
# SHP

## Square Head Plug

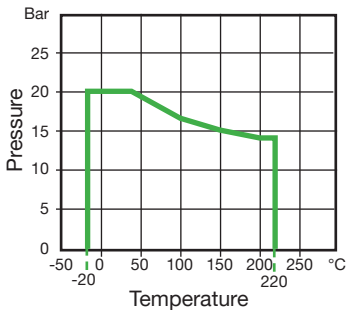


### Features

- Made from CF8M (316) Stainless Steel material and conform to ISO 4144 standard.
- Threads are to BSP Taper (ISO 7/1) or NPT (ANSI B1.20.1).
- Material certificates available on request.
- Tested & inspected prior to despatch.
- 12 month warranty from date of installation.
- Manufactured in accordance with ISO9001:2015 quality system.



DN	A	B	C	Kgs
1/8"	11.0	6.7	4.3	0.005
1/4"	16.0	9.6	6.4	0.009
3/8"	16.0	9.8	6.2	0.012
1/2"	22.6	13.6	9.0	0.030
3/4"	25.0	15.0	10.0	0.039
1"	26.0	15.0	11.0	0.056
1 1/4"	29.0	18.0	11.0	0.089
1 1/2"	30.0	18.0	12.0	0.112
2"	35.0	22.0	13.0	0.170
2 1/2"	40.0	25.0	15.0	0.347
3"	42.0	27.0	15.0	0.424
4"	52.0	33.0	19.0	0.899



Temperature (°C)	Non-shock maximum working pressure (bar)
-20 to 40	20
100	16.5
150	15
200	14
220	13.5

- NOTE 1 Pressure for intermediate temperatures may be determined by the interpolation method.
- NOTE 2 Temperatures indicated are those of internal fluid.
- NOTE 3 Piping loads, stresses and moments are not taken into account.