

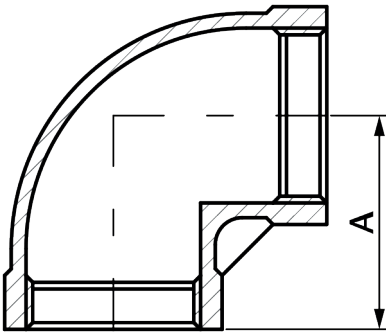
# 90E

## 90° Elbow

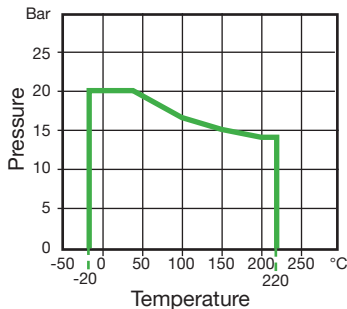


### Features

- Made from CF8M (316) Stainless Steel material and conform to ISO 4144 standard.
- Threads are to BSP Parallel (ISO 7/1) or NPT (ANSI B1.20.1).
- Material certificates available on request.
- Tested & inspected prior to despatch.
- 12 month warranty from date of installation.
- Manufactured in accordance with ISO9001:2015 quality system.



DN	A	Kgs
1/8"	17.0	0.020
1/4"	19.0	0.026
3/8"	23.0	0.044
1/2"	27.0	0.070
3/4"	32.3	0.108
1"	38.3	0.185
1 1/4"	45.0	0.285
1 1/2"	48.0	0.397
2"	57.0	0.522
2 1/2"	69.1	0.979
3"	78.2	1.366
4"	96.0	2.431



Temperature (°C)	Non-shock maximum working pressure (bar)
-20 to 40	20
100	16.5
150	15
200	14
220	13.5

- NOTE 1 Pressure for intermediate temperatures may be determined by the interpolation method.
- NOTE 2 Temperatures indicated are those of internal fluid.
- NOTE 3 Piping loads, stresses and moments are not taken into account.