

PRODUCT SPECIFICATION SHEET

APPLICATION

The Fireflow® FFSM00 series of manifolds provides a compact residential fire sprinkler system control point. The manifold is produced in 4 sizes: 25mm, 32mm, 40mm & 50mm to allow for space saving, quick installation time, with easy assemble components to meet client requirements. They are designed with gasket joint connection at every orifice, which eases both installation and future maintenance replacements. There is no requirement for thread sealants or PTFE with any threaded component.

The manifolds and components are made of Nickel-plated Brass CuZn39Pb3.

Available as part of our Fireflow® Sprinkler Manifold Kit , this kit consists of:

- 1) A Fireflow lockable Isolation Valve (the main Isolation System Valve) mounted on the entry point.
- 2) A capped off Fireflow Isolation Valve (for testing / draining the system, mounted on the side, adjacent to the output point.
- 3) A Pressure Gauge provided on the front.
- 4) A Fireflow Water Flow Switch.
- 5) Options available as listed.



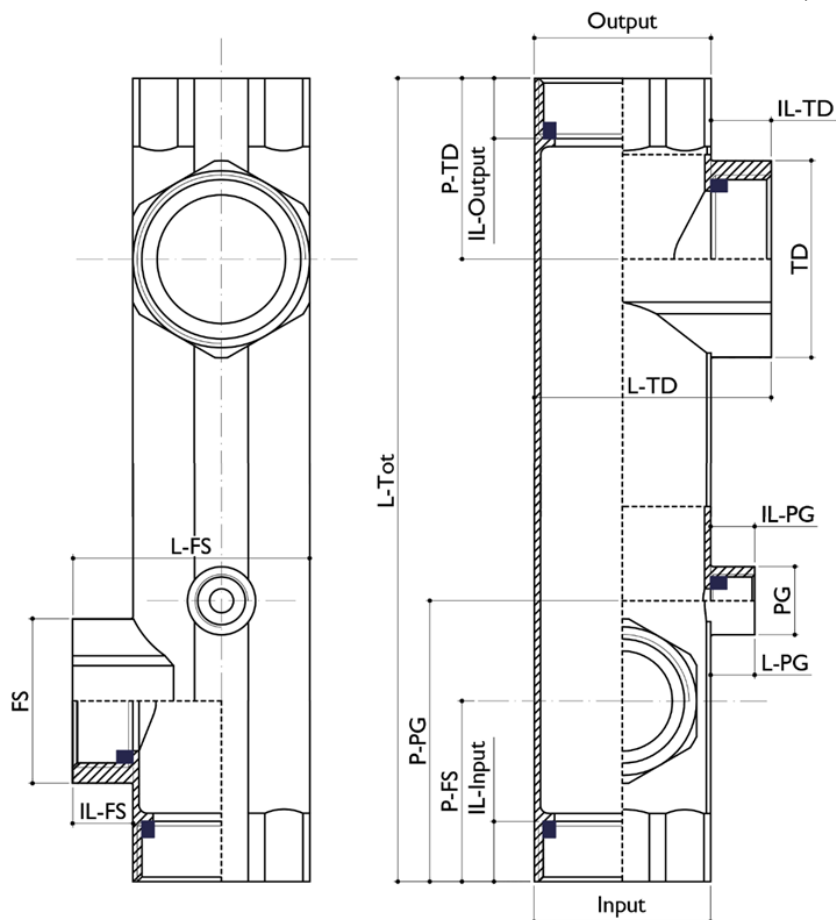
SPECIFICATION

Withstand Pressure	Maximum 16 Bar
Temperature of Fluid	Min -10°C Max 100°C
Type of Threads	Parallel BSP (or ISO228/1), including shoulders for rubber joints
Body Sizes	1" / 25mm (FFSM0025) 1" ¼ / 32mm (FFSM0032) 1" ½ / 40mm (FFSM0040) 2" / 50mm (FFSM0050)
Isolation Valves	Full bore ball valves 1 lockable valve + 1 capped off valve Male or Female connection
Applicable standards (non-exhaustive)	BS 9251 EN 16925 NFPA 13 D/R BS 8458



Fireflow Sprinkler Manifold Kit (FFSMK00 Series)

DIMENSIONS



Manifold	Output & Input	IL - Output & IL - Input	L-Tot
1" - 25mm	G1" ISO 228/1 - SW37 (Octagonal)	14	200
1"1/4 - 32mm	G1"1/4 ISO 228/1 - SW46 (Octagonal)	14	200
1"1/2 - 40mm	G1"1/2 ISO 228/1 - SW52 (Octagonal)	14	220
2" - 50mm	G2" ISO 228/1 - SW64 (Octagonal)	18	220

Manifold	TD	L-TD	IL-TD	P-TD	PG	L-PG	IL-PG	P-PG	FS	L-FS	IL-FS	P-FS
1" - 25mm	G1" ISO 228/1 - SW37 (Hexagonal)	51	14	45	G1/4" ISO 228/1	9	9	70	G1" ISO 228/1 - SW37 (Hexagonal)	51	14	45
1"1/4 - 32mm	G1"1/4 ISO 228/1 - SW46 (Hexagonal)	60	14	45	G1/4" ISO 228/1	9	9	70	G1" ISO 228/1 - SW37 (Hexagonal)	60	14	45
1"1/2 - 40mm	G1"1/2 ISO 228/1 - SW52 (Hexagonal)	66	14	60	G1/4" ISO 228/1	9	9	70	G1" ISO 228/1 - SW37 (Hexagonal)	66	14	45
2" - 50mm	G2" ISO 228/1 - SW64 (Hexagonal)	82	18	60	G1/4" ISO 228/1	9	9	70	G1" ISO 228/1 - SW37 (Hexagonal)	78	14	45

OPTIONS

ISOLATION VALVES AND FITTINGS

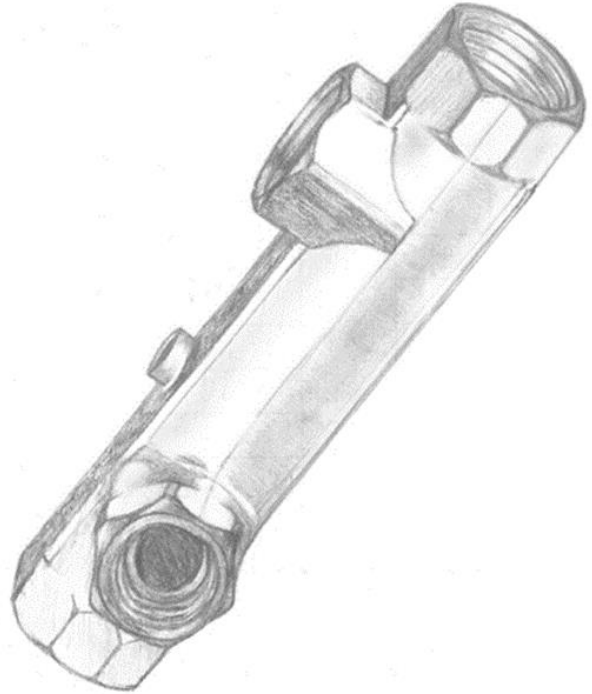
- 1 x Full bore monitoring valve:
- 1 x 3 way tee (test line)
- 1 x 5 way tee (pump connection & test line)
- Male or female brass nipples available

CHECK VALVES

- 1x spring loaded check valve *
- 1 x swing check valve

PRESSURE GAUGE

- 50mm glycerine (back or bottom entry)
0-10 bar suitable for 25mm or 32mm manifold
- 63mm glycerine (back or bottom entry)
0-10 bar suitable for 32mm, 40mm or 50mm manifold
- 100mm glycerine (back or bottom entry)
0-16 bar suitable for 50mm manifold only



FLOW SWITCH

- Water Flow Switch BSP adjustable vane type only

INSTALLATION

A working tolerance of 50mm is to be allowed around the body of the valve set for fitting and access.

MAINTENANCE

Only the pressure gauge or flow switch component can be replaced once fitted. If any other problems are encountered it is recommended that the entire valve set assembly be replaced.

* An appropriate backflow prevention device to protect against backflow from the fire sprinkler system. The maintenance of this device is the sprinkler user's responsibility.